

NOISE

Hire rate
Per week
Per month

Competitive rates
available for long term
hire

BRÜEL & KJÆR 2260 Sound Level Analyser System

Code
211 J

£295 pw
£885 pm

- Portable, lightweight real-time analyser
- Conforms to IEC and ANSI Type 1 standards
- SPL, L_{max} , L_{min} , L_N with A, C, or Lin weighting
- Fast, Slow, or Impulse time weighting
- 1/1 and 1/3 octave analysis with frequency range 31.5 Hz to 12.5 kHz
- Level and cumulative distribution
- 15 second level versus time profile
- 128 x 192 dot matrix LCD

- All measurements simultaneous and real-time with date and time stamps
- 80 dB linear range, maximum 150 dB
- Supplied with BZ7202 Enhanced Sound Analysis module and BZ7204 Building Acoustics Module
- RS232C and AC outputs
- Uses Type 4189 microphone



BRÜEL & KJÆR 2238 Integrating S.L.M. System

Code
214 E

£185 pw
£555 pm

- Class 1 to latest IEC and ANSI standards
- 4 setups can be stored (for each software)
- 4 auto-starts up to one month in advance (shared)
- Automatic data storage with preset measurement time
- Saves up to 511 files (for each software)
- Calibration history, initial and 20 latest calibrations (shared)
- Frontal/random and windscreen correction filters
- Serial interface control
- AC and DC outputs
- Criterion level (70–100 dB), threshold level (0–100 dB)
- Exposure, dose and LA_{ep,d}

- Measurement sequence, periodic reports
- LC_{eq}–LA_{eq}, LA_{eq}–LA_{eq}, LAFT_{m5}–LA_{eq}
- RMS/RMS or RMS/Peak
- Two DC inputs for external parameters
- Logging of up to 12 parameters, 1 s to 1 h intervals
- Logging of Leq and DC inputs, 100 ms interval
- Control of sound recording on PC
- Data output to file or interface
- Bar-graph display with cursor read-out
- Trigger input/output for synchronising



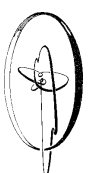
BRÜEL & KJÆR 4436D Noise Dose Meter

Code
213 C

£111 pw
£334 pm

- Daily personal noise exposure level ($L_{EP,d}$)
- Download software (supplied) permits enhanced statistical analysis and results storage on IBM PC or compatible
- Calculates sound exposure (Pa^2h)

- Level distribution and cumulative distribution
- Printer output includes time history (1 or 10 minute intervals), statistical distributions, and status



NOISE

Hire rate
Per week
Per month

Competitive rates
available for long term
hire

BRÜEL & KJÆR 2236E Integrating S.L.M. System

Code
212 E

£160 pw
£480 pm

Measures L_{eq} , SEL, SPL, MaxP and any L_N percentile for environmental purposes
Measures $L_{EP,d}$ and Peak for industrial (Noise at Work) purposes
Frequency range 8 Hz to 12.5 kHz
Compatible with many RS232 printers for hard copy results

Internal memory stores 64,800 readings
Uses type 4188 microphone
Real-time clock
Conforms to IEC and ANSI Type 1 standards
AC, DC and RS232C outputs



BRÜEL & KJÆR Field Modem Kit

Code
215

£ p.o.a.

For use with the B&K 2236 & 2260
Permits remote control of sound level meter and remote download of data via modem

Communication via wireless modem or land-line
Supplied with home base modem



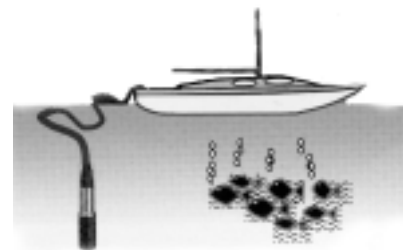
BRÜEL & KJÆR 8103 Hydrophone

Code
216 C

£160 pw
£479pm

Use with B&K 2635 Charge Amplifier
For underwater acoustic use, such as the acoustic study of marine animals or for cavitation measurements.
Can be used as an acoustic transmitter

Frequency range 0.1 Hz to 180 kHz
Receiving sensitivity of -211 dB re 1 V/mPa.
Omni-directional over wide frequency range
Double-shielded low-noise integral cable



NOISE

Hire rate
Per week
Per month

Competitive rates
available for long term
hire

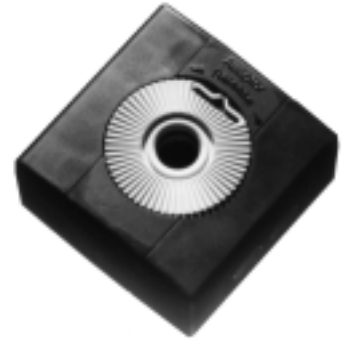
BRÜEL & KJÆR 4231 Sound Level Calibrator

Code
217A

£33 pw
£98 pm

Pocket size sound source for quick and accurate calibration of sound level meters using 1/2" and 1" microphones
Provides 94 dB and 114 dB sound levels at 1 kHz ($\pm 0.1\%$)

Accuracy at 94 dB: ± 0.2 dB at reference conditions; ± 0.3 dB from -10 to $+50^\circ\text{C}$
Accuracy of $+20$ dB level step: ± 0.2 dB
Battery operated



BRÜEL & KJÆR 4220 Pistonphone Calibrator

Code
218B

£94 pw
£282 pm

Satisfies IEC 942 (1988) Class 1 or Class 0 (with external barometer) and ANSI S1.40 - 1984
124 dB SPL at 250 Hz
Battery operated

Individually calibrated to within ± 0.12 dB (including effects of specified microphones)
High level and frequency stability
Fits 1", 1/2", 1/4" and 1/8" microphones



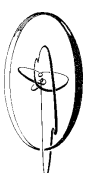
BRÜEL & KJÆR UA1404 Outdoor Microphone Protection Kit

Code
219B

£59 pw
£187 pm

Provides weather protection for the microphone - preamplifier assembly

Complete set of parts to add to existing B&K sound meter Type 2236E, 2260, 2231



NOISE

Hire rate
Per week
Per month

Competitive rates
available for long term
hire

MATRON-DP7 LP1602 Noise Monitoring System

Code
220 A

£42 pw
£125 pm

The Bruel & Kjaer MATRON-D7 noise monitoring system takes care of your more difficult and time consuming noise investigations. The complainant controls the tape recording of the noise. Meanwhile a sound level meter continuously measures and stores noise results for comparison before, during and after noise recordings.

Requires a B&K 2236E Sound Level Meter, B&K 4231 Calibrator, and Sony DAT Recorder (see pages 8, 10, & 6)
Continuous monitoring before, during and after tape recordings

Complainant activates high quality tape recording
Locked instrumentation package to prevent interference



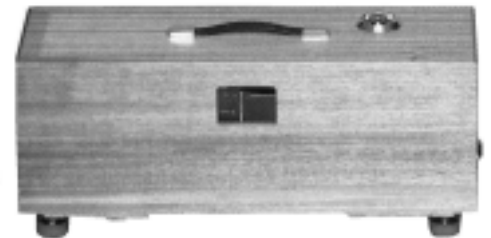
BRÜEL & KJÆR 3204 Impact Tapping Machine

Code
221 D

£157 pw
£471 pm

10 impacts per second. Deviation governed only by main frequency
Free-fall equal to 40mm
Stainless steel or ISO specified rubber hammer heads. Weight and external dimensions identical

Total weight of each hammer: 500g ±5g
Speed at impact: 885mm/sec
Instrument size: 550x240x200mm
Weight: 16kg



EON 15" Powered 2-Way Loudspeaker

Code
222 B

£45 pw
£135 pm

Used in the measurement of sound absorption, facade insulation and general sound reduction index work
Frequency range 50 Hz to 15 kHz

Maximum output 120 dB @ 1m
Mains operation
Size: H: 685mm W: 445mm D: 407mm
Weight: 15.5kg

