

COMPUTERS & PRINTERS

Hire rate
Per week
Per month

Competitive rates
available for long term
hire

TOSHIBA SATELLITE PRO 430 CDS

Code
511 C

£55 pw
£165 pm

- Intel® Pentium® III 933 mHz Processor-M
- 30 GB hard drive
- Microsoft® Windows® 2000
- 9.9 hour battery life
- 8 speed DVD ROM drive

256 MB RAM
12.1" TFT poly-silicon colour display
PCMCIA slots
Advanced Port Replicator available for increased connectivity



WORKSTATION

Code
512 E

£ p.o.a.

Ideal for use with ANSYS



PRINTER

Code
513 C

£ p.o.a.

Full colour A4/A3 printer



MARTEL MCP9810 Portable Thermal Printer

Code
514 A

£17 pw
£50 pm

High speed, high resolution printing
Versatile, for use with text or graphics
Compact and lightweight
12, 24 or 48 characters per line

Powered by internal Ni-Cad batteries
Mains charger
RS232 serial interface via 9 pin D-type connector



VIDEO PROJECTOR

Code
515 E

£ p.o.a.

Connects to computer for presentations,
displays etc



COMPUTER SOFTWARE

Hire rate
Per week
Per month

Competitive rates
available for long term
hire

**ANSYS
for Windows NT**

Code
516

**£435 pw
£1317 pm**

A general purpose Finite Element Package for analysing structures for static and dynamic loads
Includes thermal and acoustic analysis
To be hired with HP Pentium Pro 'pre-loaded'
Security device requires Insurance Cover,
please enquire for latest information

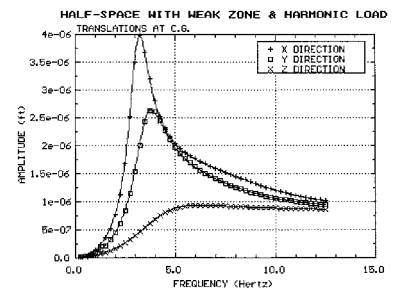


DYNA 4

Code
517

**£202 pw
£607 pm**

A program for calculating Dynamic Stiffness, Damping Matrix, and Foundation Response due to dynamic loads
To be hired with Notebook PC 'pre-loaded'



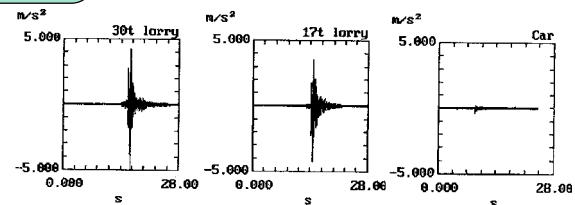
HVLab

Code
518

**£83 pw
£248 pm**

A program for signal processing
To be hired with a Notebook PC 'pre-loaded'

Calculates Vibration Dose Values
for Human Vibration assessments



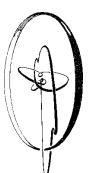
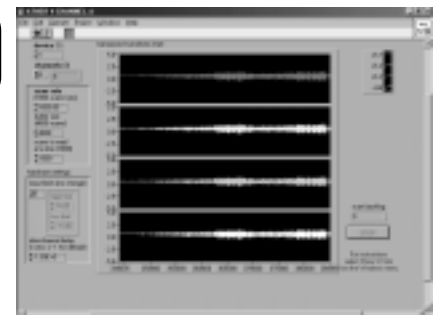
LABVIEW Virtual Bench

Code
519

**£50 pw
£149 pm**

A program for up to 16 channel data acquisition
To be hired with a Notebook PC 'pre-loaded'
For Data Acquisition hire PCMCIA DAQ Card
(p6)

Includes virtual instrument VI for:
Dynamic Signal Analyser (2 channel)
Oscilloscope (4 channel)
Data Logger (16 channels)



SERVICES

Competitive rates
available for long term
hire

CALIBRATION SERVICES

Accelerometers, geophones and noise meters. Quotation available on request



ANALYTICAL SERVICES

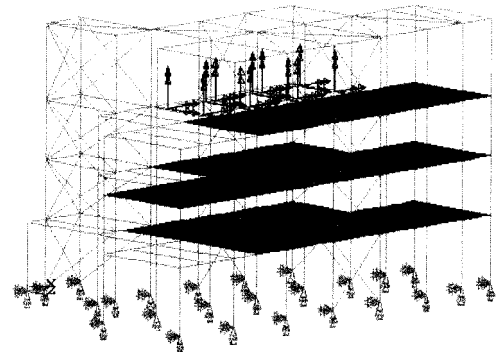
Gravimetric measurement (pre- and post-weighed filters available)
Reflectometer measurements

Water quality
Air pollution analysis



FINITE ELEMENT ANALYSIS

Structural Dynamics Modelling (Finite Element Analysis)
Noise & Vibration



SALES ENQUIRIES

Nomis Seismographs; Vibration & Noise
Air pollution monitoring equipment.
Filters - cellulose, glassfibre, silver
Bespoke PC-based monitoring installation

Check gases
Sorbent tubes

